

July 2023 Newsletter

Forthcoming Talk

*History of Barton Court, Colwall by George Demidowicz
Monday 25th September at Colwall Village Hall.
Doors open 19.00. Talk at 19.30*

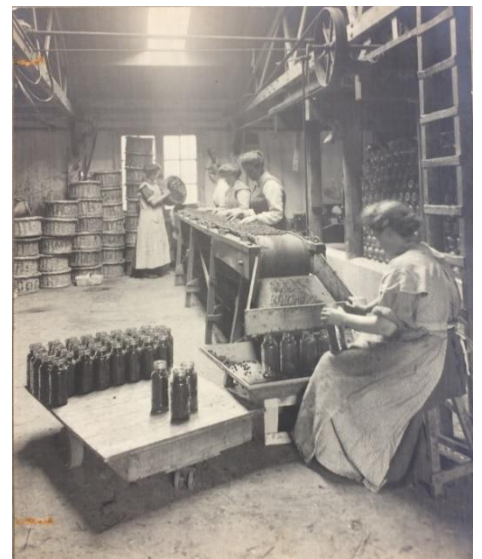
In 2021 Malvern Hills AONB commissioned George to write a history of Barton Court resulting in the book 'A History of Barton Court Colwall'. George will share with us the story of this important local house including how it has developed over the ages.

The Millennium Room at Colwall Library

The Millennium Room, the room to the left as you first enter Colwall Library in Walwyn Road, has recently undergone a facelift. The room has been redecorated, a new carpet has been fitted and additional furniture and fittings provided.

This is all part of the initiative to make this place a 'Warm Space' and a 'Talk Community Hub'. We were pleased to be able to help the Parish Council with this project and they kindly used the picture displayed here – women working in the former bottling plant in Stone Drive – to provide an attractive picture as part of the room decoration.

Checking out the 'News' page of the Colwall Parish Council website proves that the room is indeed getting a lot of use by different community organisations. The opening times of the library have been slightly extended to help facilitate this.



The Millennium Room houses Colwall Village Society's physical archive – our collection of maps, books, magazines and other documents. For research enquiries or to arrange an appointment to view during library opening hours please email

We also have a couple of display boards with details of the Society and its work. We intend to refresh the content of the display boards with new material on a regular basis. So, if you are visiting the centre of Colwall please drop into the library and have a look at the Millennium Room to see what's going on.

Golf In Colwall 1908-1921

In April 2001 Colwall Village Society published the booklet "Golf in Colwall 1908-1921" compiled by Catherine and Tony Sear. Whilst copies of this booklet have been available in the Colwall Library, Colwall Village Society wanted to make it more widely available. Thanks to work by Mike Hill, the booklet can now be downloaded from the Colwall Village Society web site at colwallvillagesociety.org.uk/Archives.html. "Golf in Colwall" provides an excellent resume of the two golf clubs which existed in Colwall between 1908 and 1921 and gives details of the significant people and events which surrounded the golf clubs. As an introduction to the theme of the booklet, this article, written by Mike Hill, gives an overview of the two golf clubs.

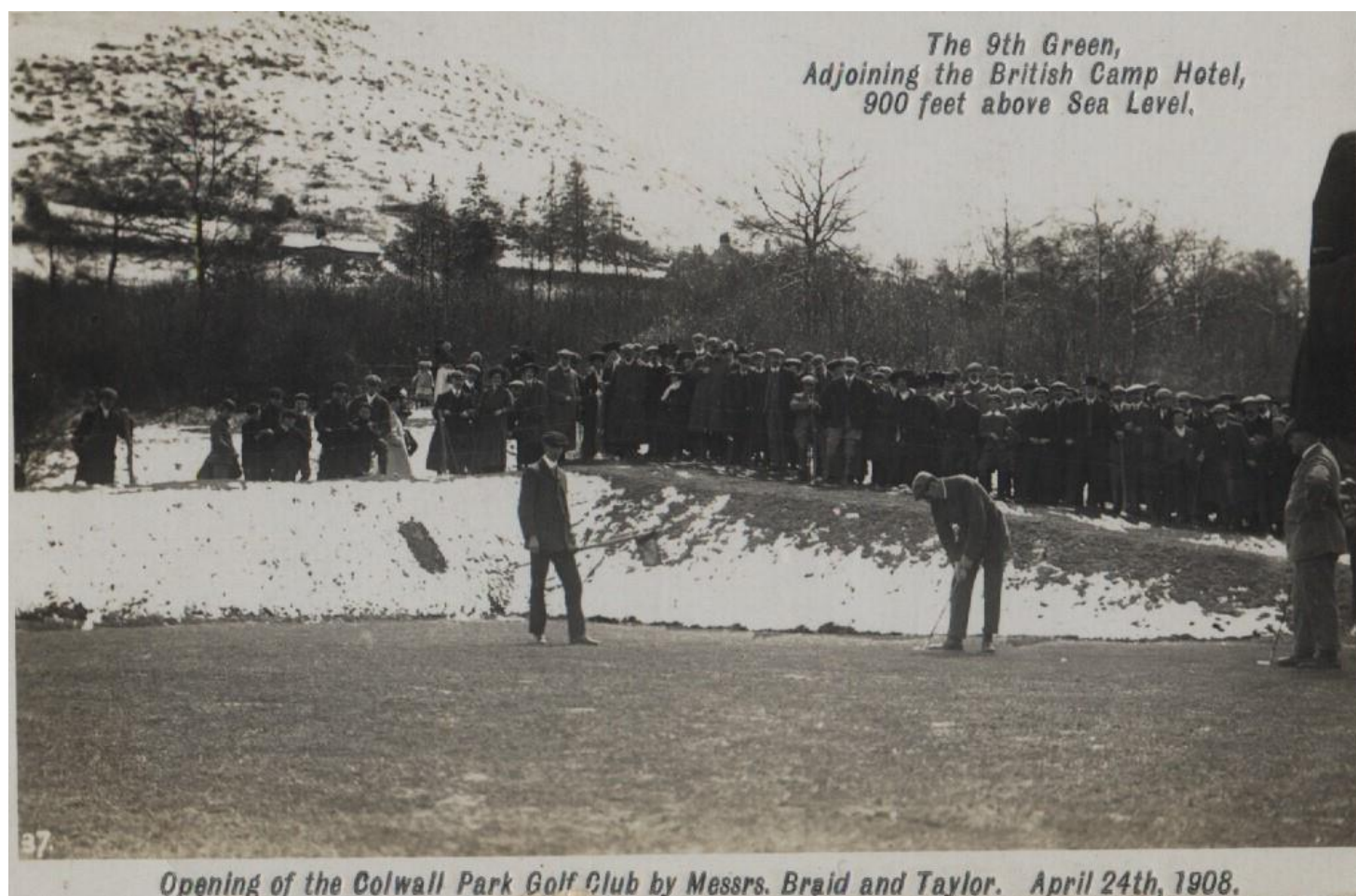
Colwall Park Golf Club

The official announcement of the formation of the Colwall Park Golf Club was made on 1st November 1907 at The Horse and Groom Hotel (now the Thai Rama). The announcement was made by Mr. Rowland Cave-Browne-Cave, later to become the 14th Baronet Sir Rowland Cave-Browne-Cave, who along with his wife Honora (Bright) Fowler ran the Barton Estate where the golf course was to be situated.

The eighteen-hole golf course was constructed to start near Colwall railway station, and then go across the racecourse to Evendine and Oldcastle, and finish by coming back by Lower House Farm and Backshill, finishing close to the railway station. The course was laid out at the expense of the Barton and Colwall Park Estate, who also maintained it. The course was said to be 3.75 miles. With the course starting close to the Colwall railway station the first club house was Stone Farm House (now Stone Holt) next to the Colwall Park Hotel.

The opening of the golf course was planned for Easter 1908. The course's first president was the Right Honourable the Earl of Chesterfield. The club was included in the Golfing Annual of 1907/8 where W.E. Hobley was identified as its first professional golfer.

The golf course was formally opened on 24th April 1908, a day after it had snowed. Fortunately, the snow only impacted one hole and the snow had disappeared by the time play got underway. The opening match was an exhibition match between James Braid and John Henry (JH) Taylor, both ex champions, and was won by Braid.

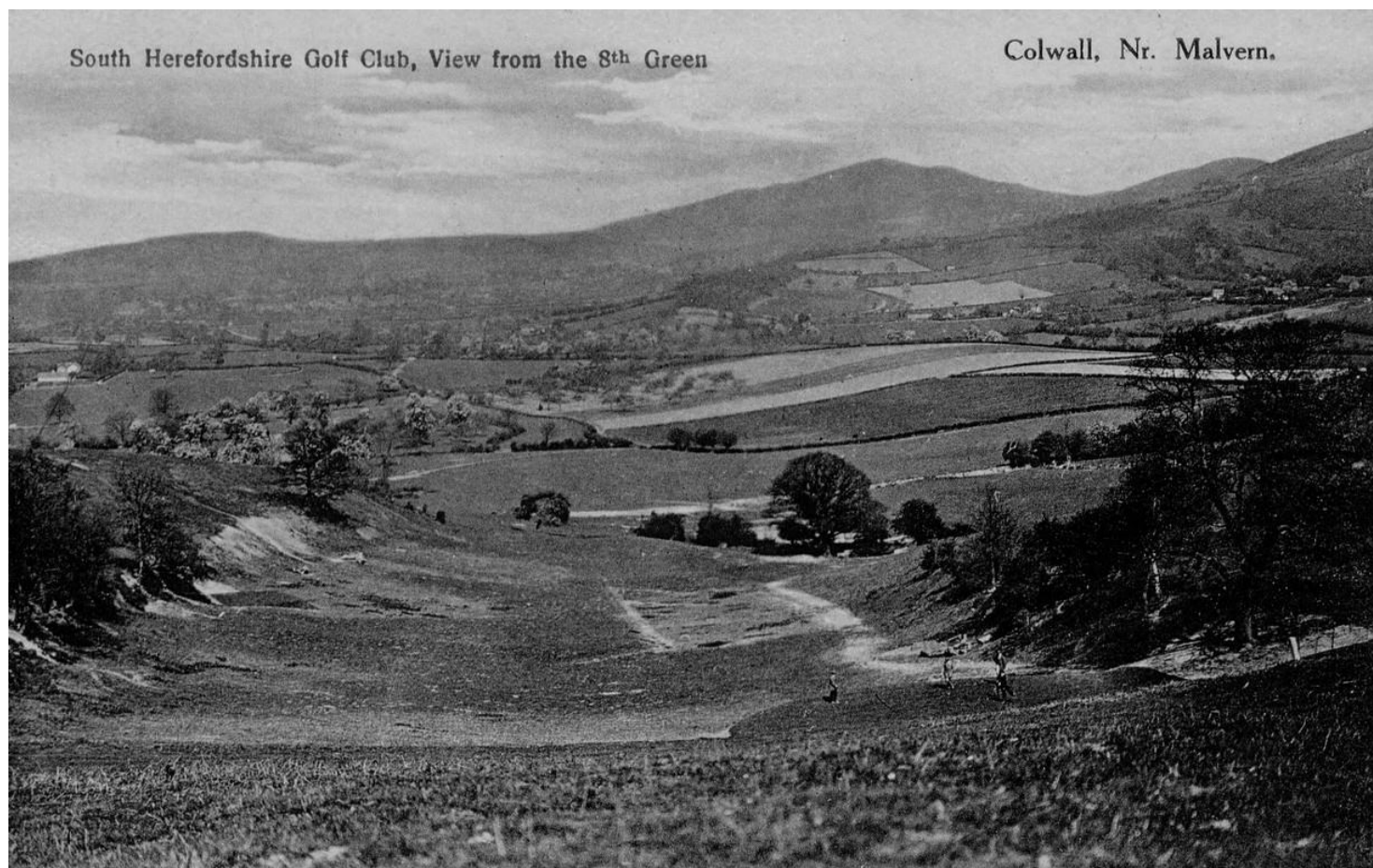


A view of the 9th green of the Colwall Park Golf Course

Unfortunately, by December 1909 Mr. Roland Cave-Browne-Cave was in serious personal financial difficulty and the public examination of his affairs was closed by the Official Receiver at Cheltenham Bankruptcy Court after a scheme of composition had been accepted. These events and the ensuing publicity probably explain the entry in Nisbett's Golf Year Book for 1911 which stated that the Colwall Park Golf Club was closed.

South Herefordshire Golf Club

In 1911 a new golf course, to be called South Herefordshire Golf Club, was inaugurated. The course would be on the Barton Court Estate but would use different greens, and be managed by a different organisation, than the Colwall Park Golf Club. The South Herefordshire Golf Club would only be situated on the far side of Evendine Lane, and hence a new golf clubhouse was built in Evendine Lane. This is now a dwelling called Kilma Lodge. The South Herefordshire Golf Club was an eighteen-hole course and was opened in 1913.



A view from the 8th green of the South Herefordshire Golf Club

Unfortunately, the South Herefordshire Golf Club did not have a long life as by 1915 the whole of the Barton Court Colwall Park Estate was up for sale including the South Herefordshire Golf Club. The South Herefordshire Golf Club was not sold at that time, it took until around 1920/21 for it to be sold. Between 1915 and 1921 some ad-hoc golf does appear to have occurred. There is no evidence of any golf being played on the course after 1921.

Location of the Golf Clubs Greens and Tees

It is difficult to determine the exact location of each of the eighteen holes of the two golf courses as there are no plans available of the courses, as you would see on contemporary golf score cards. The difference between the position of the holes of the two courses is further complicated by the fact that the South Herefordshire Golf Club utilised some of the original Colwall Park Golf Club land. It seems likely that some greens and tees from the Colwall Park Golf Club were reused by the South Herefordshire Golf Club.

The following map gives possible limits of the courses for the Colwall Park Golf Club and the South Herefordshire Golf Club, the site of the two different clubhouses and the positions of the first and second tee of the Colwall Park Golf Club. The map is based on a copy of the Ordnance Survey 1905 second edition map, with a scale of six inches to one statute mile. In the following map the solid red line depicts the limit of the course for the South Herefordshire Golf Club. Whilst the limit of the course for the Colwall Park Golf Club is a combination of that used by the South Herefordshire Golf Club plus extra land between Evendine and Colwall station, of which the limit of the start and end of the course are shown by the dashed red lines.

