

# Full Answers to 2026 New Year Quiz

1. The properties 'Hartlands' and 'The Malthouse' are in which Colwall lane?

Answer: Evendine Lane.



*The Malthouse*



*Hartlands*

2. A Colwall estate comprising a house, stables and 135 acres of land was put on the market in 1968 and attracted interest from two parties both of whom wanted to develop the site as an animal park. Which estate was this?



*Old Colwall House in 1968*

Answer: 'Old Colwall'.

The following information is from Keven Avery on the "Zoo Whose Who Centre" Facebook Site and from the Colwall Victoria County History page 42.

The Old Colwall Estate of an estate of 135 acres came up for sale in October 1968. There were two interested parties in purchasing this beautiful setting. One was Associated Pleasure Parks Ltd who operated several Zoos across the Country and whose parent Zoo was Flamingo Park Zoo in Yorkshire and the other was the, at the time, owners of Wellingborough Zoo Park Miss Eileen Thora Such and Miss Dorothy Margaret Smith.

APP Ltd were looking to create a Zoo, Picnic areas and an Amusement Park. Misses Such and Smith were wishing to set up a Wildlife Park without the amusements. Local residents were quite dead set against the APP Ltd proposal and by 10th March 1969 it looked like the decision as to who would "win" the battle for ownership would be over by 17th March 1969 when the planning committee were going to give their decision. The Managing Director of APP Ltd Mr Pentland Hick let it be known that he had offered a massive £75,000 for the property. The Planning committee were thought to have been for granting one or other of the plans but had stated they would have to get a government official to select which one would be better for the area as they were torn.

However, on the 17th March 1969 the plans from APP Ltd for their pleasure park were withdrawn due to the hostile reaction from the locals. This left Misses Such and Smith the new owners of the Estate, having also offered £75,000, and their plans for their Wildlife Park were now sure to be passed by the Committee as their plans were more amenable to the Public.

Then shock and horror as the Planning Committee rejected the Wildlife Park on the 21st March 1969.

On the 5th April 1969 it was announced that the estate would be sold at auction on 1st May 1969. The auction day arrived and the highest bid received was only £55,000 and the Estate was not sold. It was then judged by a High Court that the property should remain in the hands of the original owners as they had managed to secure funds to keep it in their hands.

**3. William James created a business in Colwall that existed from the 1880s until the 1970s. Which trade did the business operate in?**



Answer: Builders & Contractors.

The firm built many of the houses around Colwall. This photo shows some of the staff in the 1930s.

**4. 'Golden Glow' is a variety of fruit developed by Geoffrey Knight who worked in Colwall. What type of fruit is it?**

Answer: Apricot. The Golden Glow apricot can still be bought

<https://www.frankpmatthews.com/catalogue/fruit-trees/apricot/golden-glow/>



**5. Thirds Wood, on the western flanks of the Malvern Hills overlooking Colwall, is planted with conifers giving it a distinctively alpine appearance. Which European country do you associate with its other colloquial name?**

Answer: Switzerland.

The colloquial name is 'Little Switzerland'. It was first planted around 1860 as a commemorative planting for Queen Victoria's Golden Jubilee. You can read more about the wood at

<https://www.malvernhills.org.uk/media/1370/qa-works-at-thirds-wood-2017.pdf>

**6. On which piece of Colwall infrastructure might you once have seen 'Tubby' stationary at 'Windermere'?**

Answer: Downs Light Railway.

They could be found at the Downs Light Railway. 'Tubby' was a locomotive, 'Windermere' was a station. This photograph is from the Colwall Victoria County History page 90.



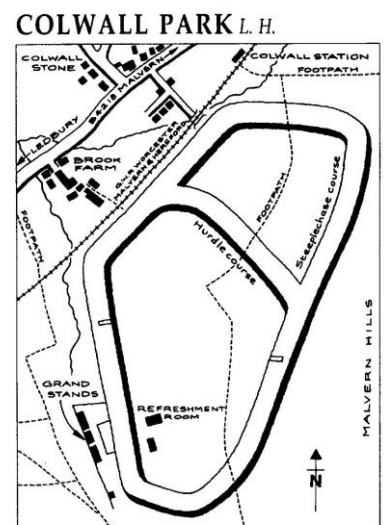
Figure 24 'Tubby', the Downs Light Railway's first steam locomotive, at 'Windermere' in 1949.

**7. The first meet, in May 1900, of which Colwall sporting enterprise attracted around 3,000 visitors?**

Answer: Colwall Park Racecourse.

The first meeting at the race course was held on Thursday May 10th 1900. The Malvern Advertiser recorded that the new steeplechase course was 1½ miles in length with eight fences made of birch, two open ditches and one regulation width water jump, which was fed by the nearby brook. The hurdle course was one mile long with eight flights.

The first day's racing attracted 38 runners for the three steeplechases and three hurdle races with the largest field being the nine runners in the Bosbury Selling Hurdle. This was a race where the rules stipulated that the winner had to be put up for sale by auction after the race. None other than Mr Roland Cave-Browne-Cave won the Bosbury Selling Hurdle with his horse "Sophos", ridden by Mr E Piggott, winning by a head to loud cheers. Under the rules of the race the horse was sold afterwards for 56 guineas (about £10,000 in 2025).



You can read more about the Colwall Race course at

<http://www.cvs.colwall.info/Articles/Racecourse.pdf>

**8. A large water-filled hole, located in the private garden of a property at the end of Old Orchard Lane, once yielded large quantities of good quality clay. Which Colwall business operated from this site around 1900?**



You can read more about the Colwall Brick & Tile Works at

<http://www.cvs.colwall.info/Articles/BrickworksArticle.pdf>

**9. Which twentieth century children's books author once lived and worked at 'The Croft' on the corner of Old Church Road and Mathon Road in Colwall?**

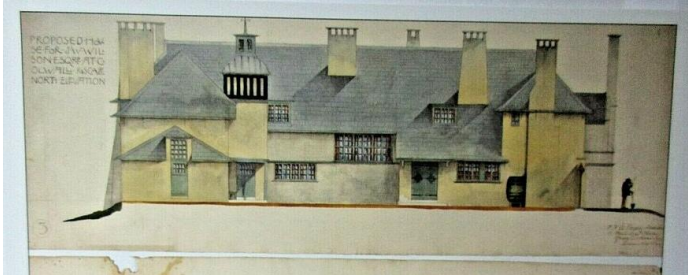
Answer: Geoffrey Trease. You can read more about Geoffrey Trease at

[http://www.cvs.colwall.info/Articles/Geoffrey\\_Trease.pdf](http://www.cvs.colwall.info/Articles/Geoffrey_Trease.pdf)

**10. In the 20th century people named Custance, Carnegy, Harris, Cooke, Sumner, White, Whatley, and Attwood all held which position in Colwall?**

Answer: They were all rectors of St. James the Great Church in Colwall.

**11. The famous Arts and Crafts architect - C.F. Voysey - designed which grand house on Jubilee Drive, Colwall for John William Wilson, M.P, in the 1890s?**



Answer: 'Perrycroft'.

Drawings for Perrycroft House.

**12. The first batch of council housing in Orlin Road, Colwall was erected in which decade? The 1930s, the 1940s or the 1950s?**

Answer: 1930s.

The first set of houses (numbers 1-12) were built about 1936, with the rest being built in 1949. The houses were built by the local James' Builders.



**13. Which Colwall landmark, according to myth, was known to rotate nine times at midnight and was once hurled by an angry giant to kill his unfaithful wife?**

Answer: The Colwall Stone. You can read more about The Colwall Stone at

[http://www.cvs.colwall.info/Articles/Colwall\\_Stone\\_Fact\\_or\\_Fiction.pdf](http://www.cvs.colwall.info/Articles/Colwall_Stone_Fact_or_Fiction.pdf)

**14. With which precious gemstone do you associate this painting by the nationally renowned artist Laura Knight, resident of the Park Hotel in Colwall during World War II?**

Answer: Ruby. The painting is "Ruby Loftus Screwing a Breech Ring". You can read more about Dame Laura Knight and her time in Colwall at

[http://www.cvs.colwall.info/Articles/Dame\\_Laura\\_Knight\\_and\\_Colwall.pdf](http://www.cvs.colwall.info/Articles/Dame_Laura_Knight_and_Colwall.pdf)

**15. In which building in Colwall can you find St. Crispin's chapel?**



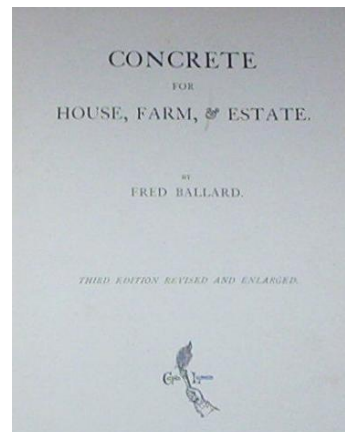
Answer: Colwall Village Hall.

This 1946 photograph shows St Crispin's Chapel with the old Village Hall behind it. The Village Hall may have changed, but not the chapel.

**16. The Ballard family in Colwall were pioneers of the use of what building material which they employed to build several grand residences and some more humble lodges around the village?**

Answer: Concrete.

In 1925, Fred Ballard published the 3<sup>rd</sup> edition of “Concrete for House, Farm & Estate” about building using concrete. It includes photographs of Labourers Cottage, Grovesend Cottage and Sunfold as well as cow stalls and a tar tank.



**17. Where in Colwall can you find the Plant Heritage National Plant Collection of Michaelmas daisies, and those of *Polypodium* and *Bistorta amplexicaulis*?**

Answer: The Picton Garden, at Old Court Nurseries in Walwyn Road.

**18. How was the waste dross from the former Ballard vinegar works in Stone Drive transported to the nearby piggery complex?**

Answer: Via a narrow-gauge tramway.

You can read more about the vinegar works and the tramway at

<http://www.cvs.colwall.info/Articles/MaltVinegarBrewery.pdf>

**19. What name links a former shop in Walwyn Road, Colwall with the first man to walk on the moon?**



Answer: Armstrong.

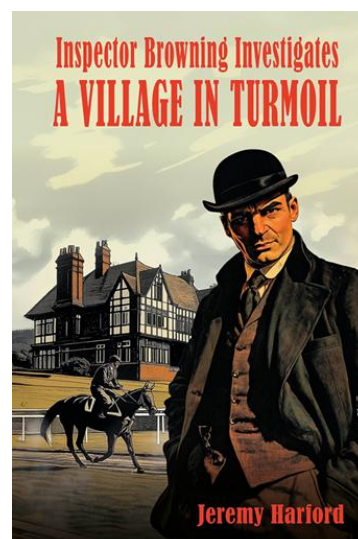
They share the name of “Armstrong”. Armstrong stores and Neil Armstrong. It is now called York House.

**20. Local resident Jeremy Harford recently released his debut novel, a whodunnit set in Colwall in the first decade of the twentieth century. What is the title of the book?**

Answer: ‘A Village in Turmoil’.

More details of the book can be found at

<https://www.jeremyharfordauthor.co.uk/>



**21. The Downs School was founded in 1900 by Herbert and Ethel Jones. With which Christian group are they both associated?**

Answer: The Quakers.

**22. 'Ghost Meadow' is associated with which Colwall club?**

Answer: Colwall Cricket Club.

The name "Ghost Meadow" is associated with the newer cricket pitch. In the 1950s, Winifred Stringer wrote a "History of Colwall" in which she wrote:

*"A footpath runs through the Brockbury meadows to the Church, called Church Walks, and one of these meadows is "the Ghost Meadow". The ghost was that of a man, some say a headless man, probably a monk. It terrified so many people during the latter part of the 19th century, that the Rev. George Custance held a ceremony to "lay" it. This meadow adjoins the present Recreation Ground. Several people have spoken to me of this ghost, the first being Mr Robert Gardiner who lives at the Wyche, and who has given me much information for this effort."*

**23. At which 19<sup>th</sup> century property in Colwall did confusion over the date of a planned visit by King Edward VII cause the servants to painstakingly rake the drive every day for several weeks?**

Answer: 'Hoe Court'.

The future king Edward VII paid a visit to Hoe Court, but confusion over his arrival date caused the servants to painstakingly rake the drive every day for several weeks. (Anecdote mentioned in "Discover Colwall" published by Colwall Village Society.)

**24. What was the lofty name of the former café in Jubilee Drive, Colwall that later became Fern Lodge?**

Answer: 'Cloud Nine'.

The café was called Cloud Nine. It was demolished in 2003 and replaced by the current house.



**25. What was the name of the spring that supplied water to the Schweppes Malvern Water plant in Colwall from the 1930s onwards?**

Answer: Pewtress Spring, later called Primeswell

You can read more about the Primeswell Spring at

<https://malvernspa.org/portfolio/primes-well-formerly-pewtriss-well/>

